

# Rockfon<sup>®</sup> Infinity<sup>™</sup> CDX/SCD

## Features & Benefits

- Finish edge trim for interior installation of concealed and semi-concealed edge suspended ceiling panels
- Available in Straight Standard profile or Razor profile
- Pre-finished in straight lengths with square cut or mitered ends
- Variety of finish options available
- Integrates with Chicago Metallic<sup>®</sup> 15/16" Ceiling Suspension, Rockfon CDX/SCD Stone Wool Ceiling Panels and industry standard T-Bar grid

## Applications

- CDX/SCD ceiling projections
- CDX/SCD free-floating islands
- CDX/SCD ceiling height transitions



Project – Rockwool Offices in Milton, Ontario  
Product – Rockfon<sup>®</sup> Infinity<sup>™</sup> CDX/SCD

# Rockfon® Infinity™ CDX/SCD Perimeter Trim

## LEED® v4.1 Highlights

### Materials and Resources (MR)

- Waste Management Planning ✓
- Interiors Life Cycle Impact Reduction ✓
- Environmental Product Declarations ✓
- Sourcing of Raw Materials ✓
- Material Ingredients -
- Waste Management ✓

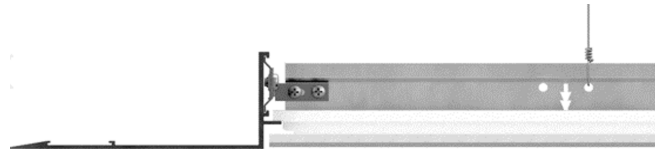
### Indoor Environmental Quality (EQ)

- Low-Emitting Materials ✓
- Interior Lighting -
- Acoustic Performance -

Recycled Content 85%



Infinity CDX Installation



Infinity CDX Razor



Family Number & Name	Edge Type	Dimensions		Material	Fire Class	Low VOC	Recycled Content
		Height	Flanges				
252565	<p>Infinity CDX/SCD INFE:CDS</p>	6"	3/4"	Extruded Aluminum	A	Yes	85%
	<p>Infinity CDX/SCD Razor INFE:CDR</p>	2"	6"				

Product Code Example:

**INFE:CDS:6":44:None**

Family Number Height Color

**INFE:CDS** **6"** **44**

Infinity  
CDX/SCD

Satin Silver

Available in straight 12' lengths or cut to length as an engineered product (shop drawings required).

Submittal drawings are required for all Engineered Infinity projects.

Unpainted galvanized grid clips, splices, and corner splices included on Engineered projects.

# Infinity™ Color Chart

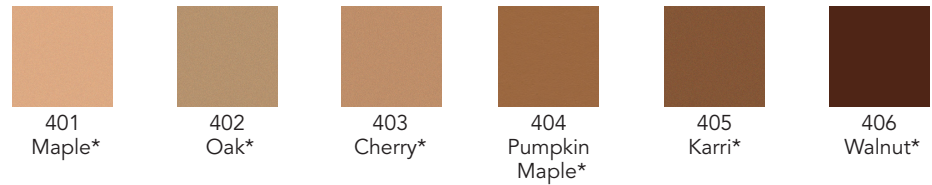
## Standard Colors:



## Premium Colors:



## Metalwood® Coordinating Painted Finishes\*:



## Woodscenes® Painted Finishes†:



\* Metalwood Woodgrain Finishes unavailable on Infinity products; use coordinating solid finish.

† Woodscenes Woodgrain Finishes are a decorative powder coat finish that replicate real wood; variations in color and pattern will occur.

**Note:**

- Woodscenes Woodgrain Painted Finishes are applied parallel to the length of the trim.
- See [rockfon.com](http://rockfon.com) for more information on color options.

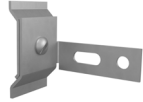
Colors shown are reproduced as close as possible to actual product color within the limitations of printing technology. Color chips are available upon request and should be reviewed before making a final selection. Variations in color matches of system components to ceiling panels can result from slight differences in texture, room lighting, painting process and subjectivity of observers.

# Rockfon® Infinity™ CDX/SCD

## Accessories



414.00 Straight Splice  
Splices Perimeter Trim Sections  
312033



430.00 Grid Clip  
Suspension to Trim  
312035



417.00 Inside Corner Splice  
For Splicing at Inside Corners  
249359



429.00 Outside Corner Splice  
For Splicing at Outside Corners  
249360



448.940  
Infinity to Planar Clip  
252596



448.00  
Infinity to Planostile Clip  
249369



447.00  
Horizontal Splice Plate  
249368



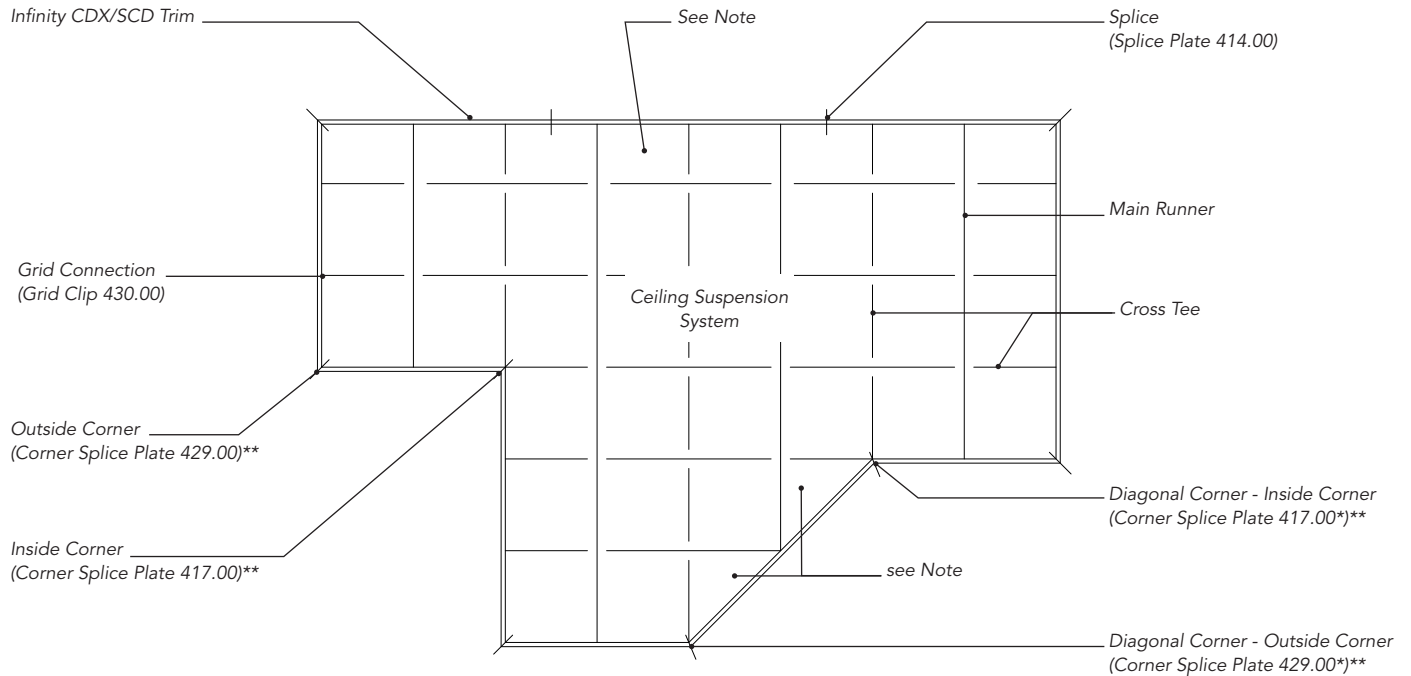
Infinity to Concealed Panels  
(per order)  
448.9xxx

Grid Clip and Splice Plate Accessories Chart Accessories Needed per 12' of Infinity CDX/SCD				
Grid Clip	Splice Plate	Corner Splices		Horizontal Splice
		Inside	Outside	
430.00	414.00	417.00	429.00	447.00
6	2	2	2	0

Grid Clip and Splice Plate Accessories Chart Accessories Needed per 12' of Infinity CDX Razor				
Grid Clip	Splice Plate	Corner Splices		Horizontal Splice
		Inside	Outside	
430.00	414.00	417.00	429.00	447.00
6	1	1	1	1

# Rockfon® Infinity™ CDX/SCD

## Reflective Ceiling Plan Example

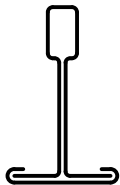


\* Field modify Corner Splice Plate to achieve desired angle greater than or less than 90°.  
 \*\* Infinity Razor Profile corners require one of each: Corner Splice Plate & Horizontal Splice Plate 447.00.

**Note:**

- For Best Practice - it is recommended that full size panels be used at the perimeter.
- Install panels toward grid side, not perimeter trim.
- Field cut perimeter panels should be back cut. See the Rockfon Conealed Acoustical Ceiling Systems Installation Guide for more information.

## Compatibility



15/16"  
Chicago Metallic  
Grid Profiles

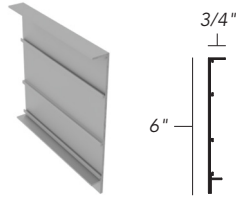
**Infinity CDX/SCD is compatible with:**

- Chicago Metallic® 15/16" face suspension systems
- Industry Standard Suspension with 15/16" face

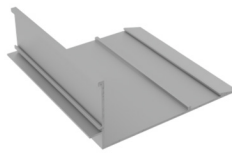
See datasheets of Chicago Metallic Ceiling Suspension systems and Rockfon Metal Ceiling systems for additional information.

# Rockfon® Infinity™ CDX/SCD

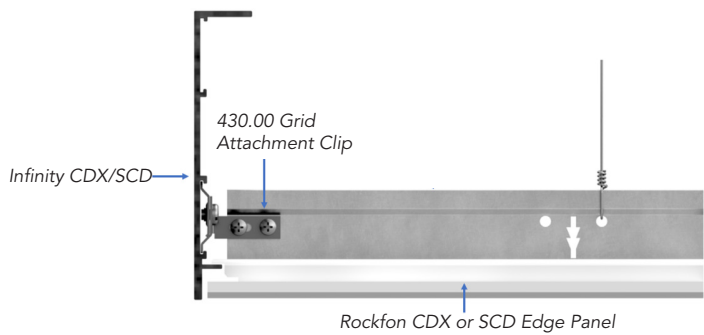
## Installation Details



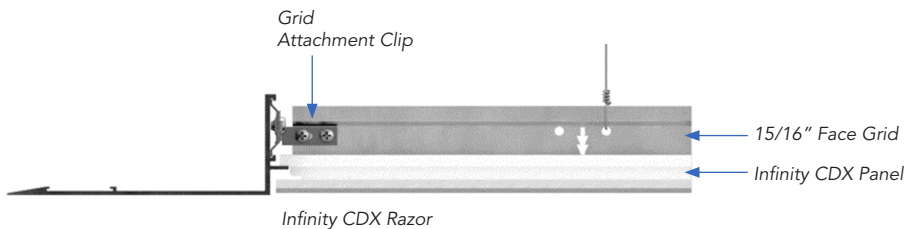
Infinity CDX



Infinity CDX Razor



**Infinity CDX Installation with Grid and Rockfon CDX Edge Tile**



**Infinity CDX Razor Edge with Grid and Rockfon CDX Edge Tile**



## Rockfon® Infinity™ CDX/SCD

### Material

Extruded Aluminum



#### Fire Performance

Surface burning characteristics:  
UL723 (ASTM E84) Flame Spread Index: 0  
Smoke Developed Index (UL Labeled): 0



#### Environment

85% recycled content  
100% locally recyclable



#### Warranty

1-Year Limited Product Warranty  
See [rockfon.com](http://rockfon.com)



#### Hygiene

Metal provides no sustenance  
to microorganisms



#### Cleaning

Damp cloth

052622

### Rockfon

4849 S. Austin Ave.  
Chicago, IL 60638 USA