

## Chicago Metallic<sup>®</sup> 260 Aluminum Cap 15/16"

### Features and Benefits

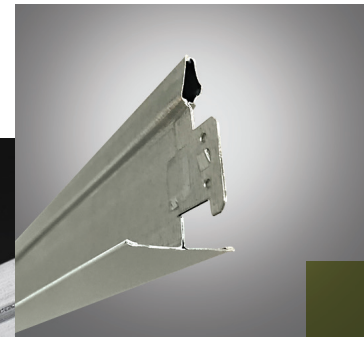
- Aluminum cap provides added corrosion resistance in interior building spaces
- Acoustical grid system comes in Intermediate and Heavy Duty designs with hook-end cross tees
- Suitable for Seismic Design Categories A-C
- Fire-rated grid components are designed with expansion reliefs, making it suitable for fire-rated ceiling assemblies
- Sustainable: Steel - 30% , Aluminum - 85% recycled content, 100% locally recyclable
- Chicago Metallic suspension systems meet Class-A flame spread rating in accordance with ASTM standard E84

### Applications

Fire-rated:

- Locker Rooms
- Commercial Kitchens
- Food Preparation Areas
- Retail

### Acoustical Ceiling Suspension System



# Chicago Metallic® 260 Aluminum Cap 15/16"



## LEED® v4.1 Highlights

### Materials and Resources (MR)

Waste Management Planning	✓
Interiors Life Cycle Impact Reduction	✓
Environmental Product Declarations	✓
Sourcing of Raw Materials	✓
Material Ingredients	-
Waste Management	✓

### Indoor Environmental Quality (EQ)

Low-Emitting Materials	✓
Interior Lighting	✓
Acoustic Performance	✓

**Recycled Content:** Steel - 30%  
Aluminum - 85%

## Performance Properties:

<b>Base Material</b>	Hot-Dip Galvanized Steel (HDG-30)
<b>Capping / Finish</b>	Aluminum / Baked Polyester Enamel
<b>End Details</b>	<b>Main Runners:</b> Non-Directional Bayonet Coupling <b>Cross Tees:</b> Hook-End
<b>Structural Classification</b>	Intermediate and Heavy Duty per ASTM C635
<b>Flame Spread Rating</b>	Class A per ASTM E84
<b>Warranty</b>	40-Year Suspension System Warranty
<b>Recycled Content</b>	Steel - 30%, Aluminum - 85%

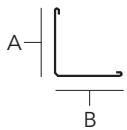
## Main Runners/Cross Tees

Detail	Product Number	Length x Height (A) x Face (B)	Slotting	Structural Classification (ASTM C635)	Fire-Rated	Seismic	Packaging			Palletization	
							Pcs/ Ctn	LF/ Ctn	Lbs/ Ctn	Ctn/ Pallet	Lbs/ Pallet
<b>Main Runners</b>											
	260.01AZ	144" x 1-41/64" x 15/16"	6" OC	ID	✓	A-C	20	240	49.2	30	1476
	280.XXZ.01	144" x 1-41/64" x 15/16"	6" OC	HD	✓	A-C	20	240	66.4	30	1992
<b>Cross Tees</b>											
	262.01AZ	24" x 1-1/2" x 15/16"	No Slots	-	✓	A-C	60	120	25.6	64	1638
	264.01AZ	48" x 1-1/2" x 15/16"	3 Slots 12" OC	-	✓	A-C	60	240	51.6	30	1548

Custom slotting available. Contact Rockfon Customer Service for details and service levels.

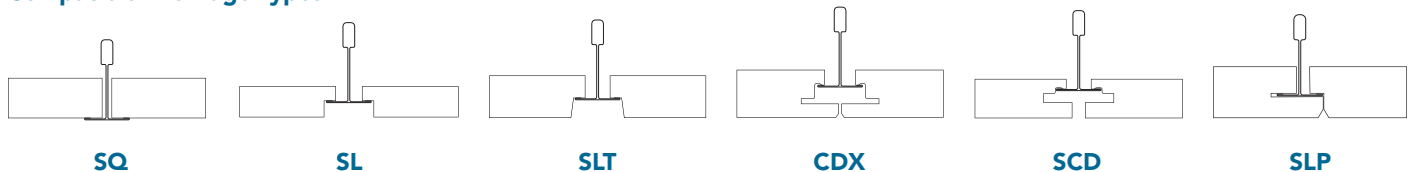
## Perimeter Components

### Wall Angles





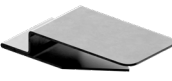


Product Number	Length x Height (A) x Face (B)	Packaging			Palletization	
		Pcs/ Ctn	LF/ Ctn	Lbs/ Ctn	Ctn/ Pallet	Lbs/ Pallet
1409.01AH	144" x 3/4" x 15/16"	25	300	42	40	1680

## Compatible Tile Edge Types



# Accessories

	Detail	Rockfon Part Number	Product Number	Product Description	Packaging	
					Pcs/Ctn	Lbs/Ctn
General Clips		250348	935.00	Universal Hold Down Clip	1000	16
		252923	425.01	Hold Down Clip for 5/8" Board 250/1250 Systems	200	2
		250343	820.00	Hold Down Clip for 5/8" Board 250/1250 Systems	1000	7
		237949	490.00	Hold Down Clip for 0" - 3/4" Panels (Black)	100	2
		237952	491.00	Hold Down Clip for 3/4" - 1-1/4" Panels (Blue)	150	2
		237954	492.00	Hold Down Clip for 1-1/2" Panels (Grey)	100	2
		250324	426.01	Butterfly Retention Clip for 0" - 1" Panels	200	15
		250325	427.01	Butterfly Retention Clip for 1" - 2" Panels	150	15
		254302	88.00	Border Spring Clip	1000	17
		253183	479.00	90-degree Corner Clip	25	5
		251952	1499.00	Perimeter Grid Clip	100	4
		250321	410.00	Transfer Load Clip, 15/16" Grid (Used to suspend decorative ceilings under acoustical ceilings)	500	28
		250372	1493.00	Unopposed Tee Clip	100	2
Facett Panel Clip		260623	495.00	Facett™ Hold Down Clip Kit for 2" – 4" Panels	100	2
Shiplap Clip		250337	477.00	48" SLP Spline, for use with Rockfon Sonar 4x4 SLP	1	1
Spacer Bars		294621	826.00H	2' Spacer Bar for rectangular bulb components	40	15
		294623	828.00H	4' Spacer Bar for rectangular bulb components	40	29
		294619	824.00H	4' Spacer bar notched 2'. For rectangular bulb components.	40	29

	Detail	Rockfon Part Number	Product Number	Product Description	Packaging	
					Pcs/Ctn	Lbs/Ctn
CDX Tiles Accessories		237264	-	CDX Perimeter Spring	100	1.1
		250338	478.00	Concealed Perimeter Clip	50	4.5
		314292	472.00	CDX/SCD Border Clip	100	1.1
		250334	474.01	24" Pre-mitered Vinyl Trim Kit for CDX and SCD only	50	1.4
		250335	475.01	24" Pre-mitered Vinyl Trim Kit for CDX and SCD only	50	2
	250336	476.01	120" Vinyl Trim Piece Straight Cut	1	1	

Hanger Wire		250590	96CTL144	Hanger Wire 12' x 12-Gauge	Bundle	50
Grid Paint		250350	940.01	12 oz. Grid Spray Can - White	1	1
		250351 & 250352	940.08 & 940.44	12 oz. Grid Spray Can - Black & Satin Silver	1	1
Tools		250349	937.00	Cross Tee Slotter	1	3
		250353	943.00	Cross Tee Removal Tool	1	1
		250354	944.00	Wire Tie Tool	1	1

# Grid Colors

## Standard Colors:



01  
White



08  
Black



44  
Satin Silver

## Premium Colors:



Color-All



Custom  
(Color Match)

## Metalwood® Solid Coordinating Colors:



401  
Maple\*



402  
Oak\*



403  
Cherry\*



404  
Pumpkin  
Maple\*



405  
Karri\*



406  
Walnut\*

## Woodscenes® Painted Finishes†:



800  
Lazy Maple



801  
Aged Teak



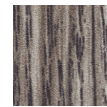
803  
Burnished  
Cherry



804  
Sleek Cherry



805  
Weathered  
Oak



806  
Barnwood  
Grey

\* Coordinating solid color to match Metalwood Woodgrain Finishes.

† Woodscenes Woodgrain Painted Finishes are a decorative powder coat finish that replicate real wood; variations in color and pattern will occur.

Colors shown are reproduced as close as possible to actual product color within the limitations of printing technology. Color chips are available upon request and should be reviewed before making a final selection. Variations in color matches of system components to ceiling panels can result from slight differences in texture, room lighting, painting process and subjectivity of observers.

# Performance

## Main Runner Allowable Load Test Data Based on 1/360 Span Deflection (Lb/Ft\*)

Main Runner	Length	Fire-Rated	Hanger Spacing		
			ASTM C635 - 4'	5'	6'
260.01AZ	144"	✓	ID	6.3	3.9
280.XXZ.01	144"	✓	HD	8.3	5.1

## Cross Tee Allowable Load Test Data Based on 1/360 Span Deflection (Lb/Ft\*)

Cross Tee	Length	Fire-Rated	Cross Tee Span			
			2'	4'	5'	6'
262.01AZ	24"	✓	32.5♦	-	-	-
264.01AZ	48"	✓	-	10.6	-	-

\* To convert data into lb/ft<sup>2</sup>, divide on center spacing of suspension component into lb/ft.  
♦ Limited by safety factor of 2.  
Install systems in accordance with ASTM C636. Other requirements may apply.

## Non-Fire-Rated Light Fixture Allowable Load Test Data Based on 1/360 Span Deflection (Lbs)

Light Fixtures	Allowable Fixture Weight - Lbs. Main Runners & Cross Tees	
	280.XXZ.01 264.01AZ	260.01AZ 264.01AZ
Dimensions		
1' x 4'	56.4	56.4
2' x 2'	34.8	34.8
2' x 4'	47.2	47.2

Consult specific UL design for allowable lighting configurations.  
Allowable fixture weight is based on single fixture in the field only.  
For end-to-end, tandem or other configurations, contact Rockfon Technical Support.

## UL® Fire-Rated Assemblies

### Floor and Ceiling Designs - Type 260/Aluminum

D209	D215	D216	D219	G022
G201	G208	G209	G210	G211
G213	G214	G215	G216	G217
G218	G222	G228	G234	G241
G242	G244	G248	G250	G255
G256	G258	G259	J201	L201
L202	L206	L208	L209	L210
L211	L212			

### Roof and Ceiling Designs - Type 260/Aluminum Cap

P201	P202	P203	P204	P206
P207	P210	P211	P214	P215
P216	P217	P219	P225	P227
P228	P229	P230	P231	P235
P237	P238	P239	P241	P244
P245	P246	P251	P255	P259
P260	P261	P264		

## Material

ASTM C 635 Heavy Duty (HD) and Intermediate Duty (ID) main tee classifications; commercial quality HDG-30 steel, hot-dip galvanized body and aluminum cap, 15/16" width, 1-41/64" height.

Note: A metallurgist should be consulted regarding the suitability of this product for the environmental conditions in which it is being installed.

042823

**Rockfon**

4849 S. Austin Ave.  
Chicago, IL 60638 USA

Tel. +1-800-323-7164

[cs@rockfon.com](mailto:cs@rockfon.com)

[rockfon.com](http://rockfon.com)

2023 | Subject to alterations in range and product technology  
without prior notice. Rockfon accepts no responsibility for printing errors.  
© ROCKWOOL A/S 2022. All rights reserved.  
® denotes a trademark that is registered in the United States of America.