

Rockfon® Spanair®

Hook-in Plank System

Interior Installation Guide



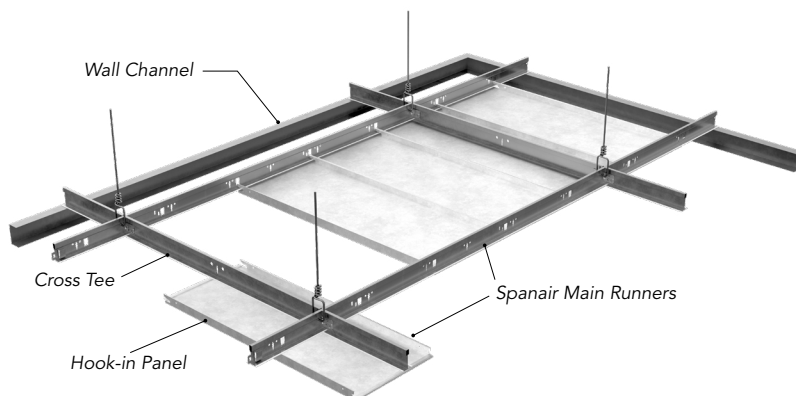
*Project – Cranbrook Kingswood Middle School, MI
Product – Rockfon® Spanair® Hook-in*

System Overview

Rockfon Spanair Hook-in is a fully concealed plank system for interior applications only. The gasketed panels are butt edge and install into 1-3/8" wide Spanair main runner and cross tees. The panels install from below the suspension and are 100% downward accessible.

Note - This system is suitable for use in seismic design categories A-C only.

[Download Datasheet](#)



Best Practices

Always follow good safety practices when installing ceilings. Prior to beginning installation ensure that all materials are received and in good condition. Record any shipping damage on the carrier's bill of lading and contact Rockfon immediately to order replacement material:

- Email: cs@rockfon.com
- Fax: 866-211-3824
- Tech Services: 800-323-7164

*If there are any issues with your order, contact Customer Service at 1-800-323-7164, telephone option 1.
E-mail replacement material orders, including your purchase order number on document, to cs@rockfon.com.
For technical assistance, contact Technical Services at 1-800-323-7164, telephone option 2.*

Installation Conditions

Temperature and Humidity

Avoid installation in high moisture conditions where the space is not properly ventilated and acclimatized.
Rockfon Spanair Hook-in panels should be installed in a clean environment, free from construction dust and debris.

Handling

Panels come shipped in cartons and should be stored in a dry location. Prior to installation, inspect the cartons for damage. Use care in handling and removing the panels. It is recommended to use clean gloves with a non-marking rubber/latex coating or polyethylene gloves when handling Rockfon metal ceiling panels to avoid contamination. For panels larger than 4' it is recommended that two installers handle the panels when moving or installing into the ceiling plane.

Reference Documentation

Several industry standards are published and available. Acoustical and metal ceiling installers should familiarize themselves with the installation methods and best practices recommended for ceiling systems.

Prior to installation, it's imperative the installer become familiar with any project specific documentation available. These items will confirm ceiling layout, panel sizes and finish, ceiling accessories, ceiling fixture layout and orientation, and any special edge conditions.

Industry Standard Documentation

- ASTM C636 (Standard Practice for Installation of Metal Ceiling Suspension Systems for Acoustical Tile and Lay-in Panels, <https://www.astm.org/Standards/C636.htm>)
- [CISCA Metal Ceilings Technical Guidelines](#)
- [CISCA Ceiling Systems Handbook](#)

Project Specific Documentation

- Reflected Ceiling Plans
- Project Specifications
- Approved Project Submittals (data sheets, shop drawings)

Other Documentation

- [Metal Panels and Planks Brochure](#)
- [Product Case Study](#)
- [Product Specification](#)

Tools Required

- Laser or leveling device
- Circular saw/jigsaw/electric shears
- Bandsaw
- Marking tool (pencil)
- Pliers
- Clean gloves
- Aviation snips
- Panel removal tool
- Tape measure
- Drill
- Screwdriver (Phillips, Flathead)

System Components



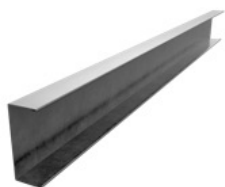
Spanair Hook-in Panel



Spanair Main Runner



Cross Tees
Varied Lengths



Wall Channel



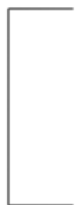
Infinity Trim



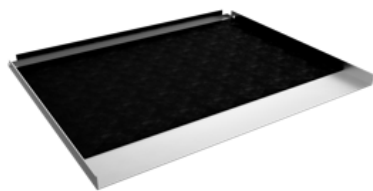
Bridging Yoke



Infinity Attachment Bracket



Hold Down Insert



Acoustical Pads



Wall Springs



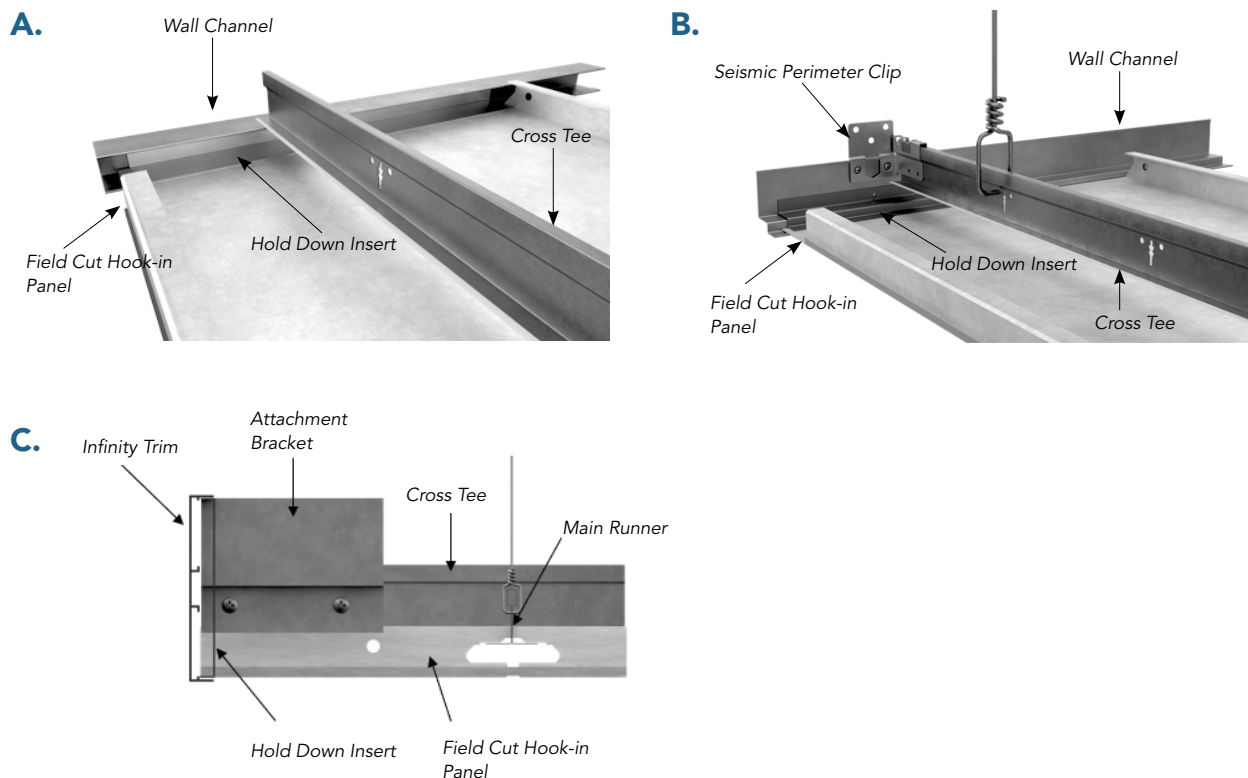
Seismic Perimeter Clip

1. Suspension System Installation

All suspension must be installed per ASTM C636 including local building codes and standards. Special attention should be given to the squareness of the system. Unlike lay-in ceiling tiles, concealed ceilings are more sensitive to a system being out of square. It is recommended that a system be square within 1/16" over an 8' diagonal. Failure to have a square system will create a poor aesthetic with misalignment in the corners and difficulty in installing the panels. It is also recommended to plan the layout for equal borders and that small perimeter panels less than 1/2 of a panel's width be avoided. Use minimum 12-gauge galvanized steel hanger wire per ASTM C636 for suspending the grid.

- 1.1** Secure the specified perimeter treatment (see options below) to the walls using appropriate fasteners. Reference any project documents for proper ceiling elevation. The suspension will rest on the top leg of the channel.

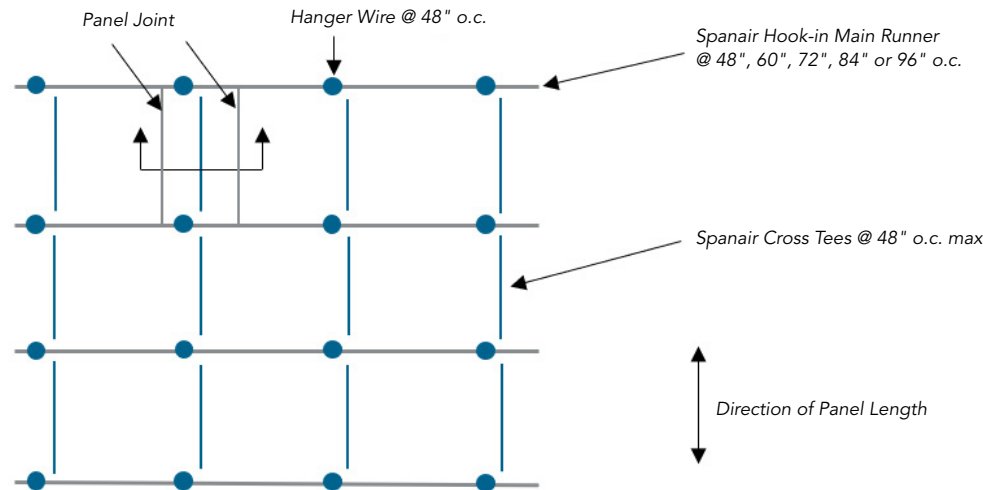
Panel installations that finish at the wall are trimmed out by wall channel. Floating installations are trimmed out with Infinity extruded aluminum trim.



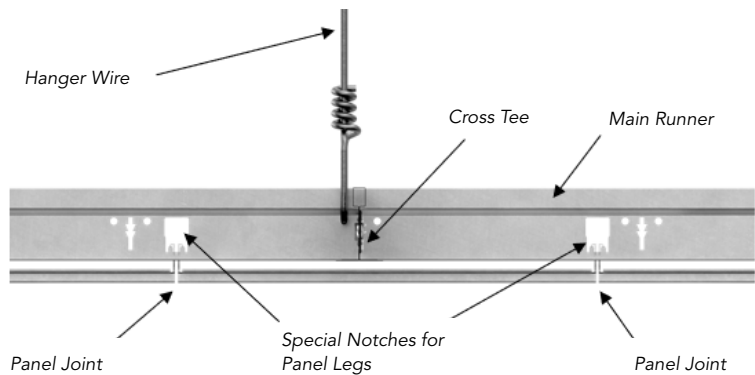
1.2 The layout of the suspension is dependent upon the length of the panels. Main runners, with special panel punches, are to be installed with the on center spacing equal to panel length. The installer should become familiar with the grid slotting prior to installation. Refer to project drawings for panel layout, if available. Cross tees must be installed in consecutive rows to match the panel length (48", 60", 72", 84", or 96"). Cross tees are used to space main runners only with no additional loading applied to them.

Note - Panel joints align with center line of special punch in main runner. Cross tees do not align with panel joints.

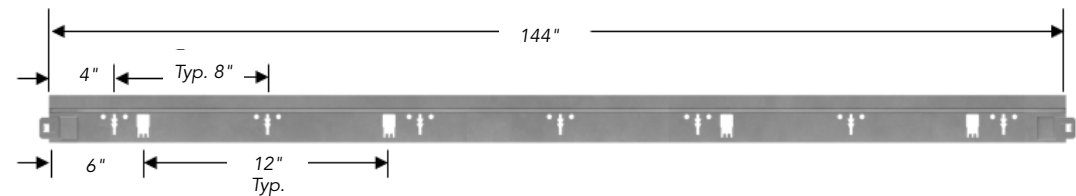
Suspension Layout



Cross-Section Through Panel Joint



Main Runner Slotting



2. Panel Installation

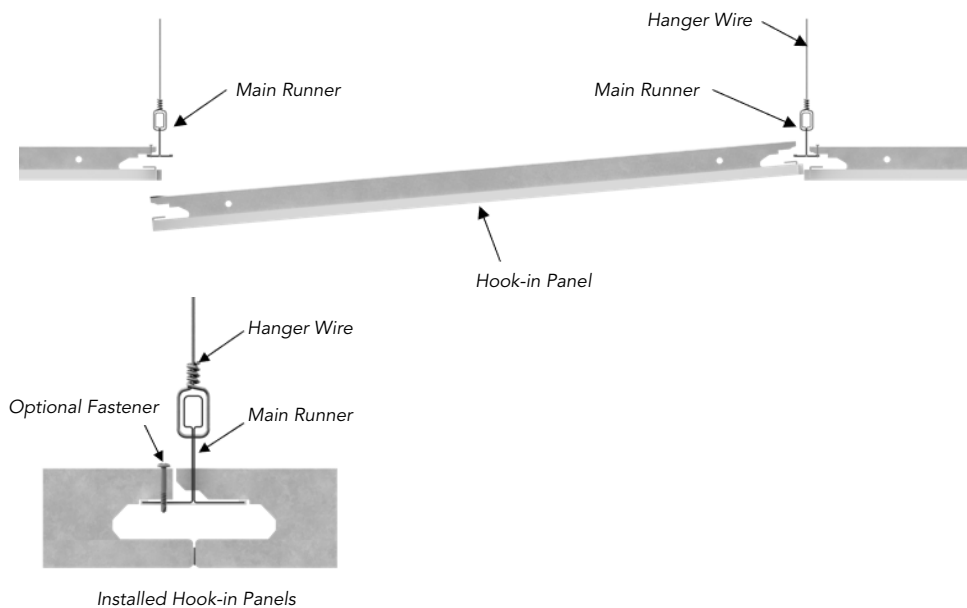
Note - Prior to panel installation, double check squareness of the suspension system.

- 2.1** Install corner pieces first and continue with the remainder of the perimeter panels. For cut panels, determine panel orientation and field cut panels to length. Notch the panel flange to allow clearance for the wall channel, this enables the panel to sit on bottom leg of wall channel.

(Option) - Perimeter panels may be locked in place by fastening panel to main runner via hole on top of flange.

Use hold down inserts to hold the cut edge of the panels in place along the bottom leg of the channel. Wall spring clips can also be used in spot locations. Use a minimum of one hold down insert per foot of panel width to maintain uniform contact with trim edge. Once the hold down inserts are installed, the perimeter panels are not accessible until the hold down inserts are removed.

- 2.2** Continue with the full size field panels. Panels are a directional install due to the gasketing on the two adjacent sides. At an angle, insert the long tab of the panel through the special notches in the web of the main runner then rest the short tab of the panel on the opposite main runner flange. Verify panel joint alignment as installation progresses, adjust if necessary.



- 2.3** Cutting metal panels is often required at wall terminations where full size panels cannot be utilized. This is typically performed using a circular saw with an appropriate high quality metal cutting blade. Use all required personal protective equipment, as well as all appropriate safety precautions. Use properly sized backer material (foam, ceiling panel, wood etc.) inside the panel. Once the blade is at full speed, slowly cut the panel. Be aware, pushing the saw too quickly will result in sharp edges and a poor cut quality.

3. Panel Removal

Plenum access is often required to service HVAC, Plumbing, and Electrical. Panel removal is achieved by lifting and then shifting forward one side toward the grid, hold the panel in place as the other side will drop down for complete panel removal.

4. Service Integration

Fire sprinkler, speaker holes, etc., can easily be cut with a drill and hole saw. For recessed fixtures, the preferred type for Hook-in panels are flanged style fixtures. These types of fixtures are trimmed and hide the cut edges of the metal panels. Linear, trim-less light fixtures and diffusers can be installed however proper planning is required early in the shop drawing/submittal phase of a project. In some cases, custom sized panels adjacent to the fixtures can be manufactured, however, approved fixture data sheets shall be provided to RFN for incorporation into the project shop drawings for customer approval. In other cases where time does not permit, fixture openings can be trimmed out with channel or angle. Fixtures shall not be installed in line with main runners or cross tees. For longer fixtures that disrupt the suspension, “bridge” the suspension with bridging yokes.

5. Cleaning

Select a mild, non-abrasive cleaning agent typically used for cleaning painted or reflective surfaces. Never use abrasive cleaning agents, as they may scratch, mar, alter, discolor, and/or remove the finish.

Before cleaning the finish, perform a trial test on a section of the finish which will be hidden from view once installed. This will ensure that the cleaning agent selected is appropriate and will not damage the finish in question.

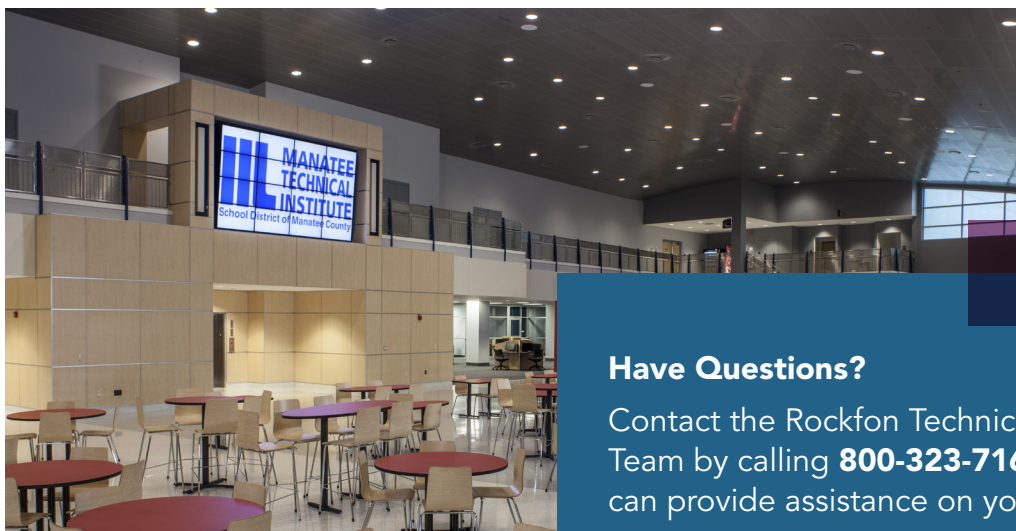
Once an appropriate cleaning solution has been selected, care should be taken to use only the amount which is necessary. Do not soak the ceiling components with the solution.

Use a clean soft sponge or cloth when applying the cleaning agent in order to ensure the applicator does not contain any abrasive elements which may damage the finish.

Any excess cleaning solution should be removed immediately so that the solution does not dry and possibly leave a residue. In the event a large area needs to be cleaned, it is advisable to break the area into smaller, more manageable sections, so that adequate time is available to complete each phase of the cleaning process.

After cleaning the soiled or smudged area, wipe the surface with a dry soft cloth to remove any residual cleaning solution and to dry the area. Use a clean damp cloth to remove any residue that cannot be removed with the dry cloth. Repeat the drying process.

After the components are clean, allow a few minutes for air drying before installation. It is important that the clean components are dry to ensure that other materials, such as insulation, which may be susceptible to damage from moisture does not come contact any moisture or damage from the cleaned materials. For additional cleaning information, please refer to our technical datasheet “[How to Clean Painted and Reflective Ceiling Component Surfaces.](#)”



Have Questions?

Contact the Rockfon Technical Services Team by calling **800-323-7164** and we can provide assistance on your project.

Rockfon® is a registered trademark
of the ROCKWOOL Group.

2021 | Subject to alterations in range and product technology without prior notice. Rockfon accepts no responsibility for printing errors.
© ROCKWOOL International A/S 2018. All rights reserved. ® denotes a trademark that is registered in the United States of America.

123021



Rockfon
4849 S. Austin Ave.
Chicago, IL 60638 USA

Tel. +1-800-323-7164
cs@rockfon.com
www.rockfon.com