

Rockfon® Island™ Wall System



Features & Benefits

- Frameless stone wool acoustic wall panel for areas where extra sound absorption is required
- Smooth white panel surface providing high light reflection and light diffusion
- Class A Fire Performance
- Quick and easy to install with special wall offset installation kit
- Panels can be layered effectively with the use of different wall offset kits
- The Rockfon Island Wall System is comprised of Rockfon Island stone wool panels and Rockfon Island Wall System Installation Kit

Applications

- Office
- Hospitality
- Retail
- Open Plan Space



High Acoustic Absorption



Class A Fire Performance



Moisture and Sag Resistance



Smooth, Modern Aesthetics



Mold and Mildew Resistance



30-year Warranty Applies to All Stone Tiles and Panels



Rockfon® Island™ Wall System

LEED® v4.1 Highlights

Materials and Resources (MR)



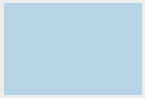

- Waste Management Planning
- Interiors Life Cycle Impact Reduction
- Environmental Product Declarations
- Sourcing of Raw Materials
- Material Ingredients
- Waste Management

Indoor Environmental Quality (EQ)

- Low-Emitting Materials ✓
- Interior Lighting ✓
- Acoustic Performance ✓

Recycled Content: 29%***

Rockfon Island Panels

Edge Designation	Item Number	Shape	Modular Size (nominal)	Fire Class	Mold & Mildew Resistance	Sag Resistance* (relative humidity)	Light Reflectance	Embodied Carbon		Low VOC	lbs/ unit	Units/ Carton
								Per 1m ² (kg CO ₂ - eq)	Per 1ft ² (kg CO ₂ - eq)			
 Square Chamfered	8100		4' x 4' x 1-1/2" *	A	✓	up to 100%	0.86	6.13	0.570	✓	19.84	4
	8125		4' x 6' x 1-1/2" **	A	✓	up to 100%	0.86	6.13	0.570	✓	28.66	4
	8150		4' x 8' x 1-1/2" **	A	✓	up to 100%	0.86	6.13	0.570	✓	38.02	2

* One wall system kit installs (2) 4' x 4' wall panels

** One wall system kit installs (1) 4' x 6' wall panel or (1) 4' x 8' wall panel

***Recycled content values for our stone wool tiles and panels are based on 2021 production averages of a standard 2' x 2' tile and their primary production location.

- Rockfon Island Wall System should only be attached using Rockfon Island Wall Brackets.
- Rectangle 4' x 8' can only be mounted horizontally by its longest sides.
- Rockfon Island Wall System should not be used in swimming pools, outdoor environments or areas subjected to wind loads and drafts.
- Recommended to locate panels outside the reach of circulation paths.
- See Rockfon Island data sheet and Rockfon Island Wall System Installation Guide for more information.

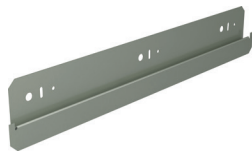
Rockfon Island Wall System Installation Kits

Direct Island Wall System Kit - 5/8" wall offset

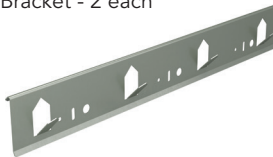
251565

Kit includes:

Wall Bracket - 2 each
(5/8" wall offset)



Panel Bracket - 2 each

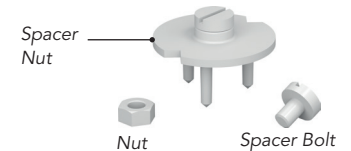


Stepped Spacer Assembly
(includes 2 each)

Spacer Nut - M8

Nut - M8

Spacer Bolt - 3/8"

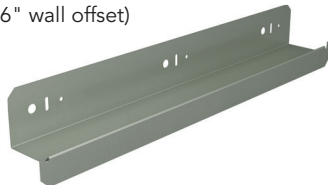


Stepped Island Wall System Kit - 2-9/16" wall offset

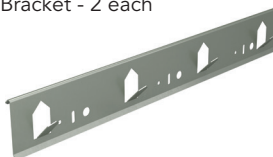
251568

Kit includes:

Wall Bracket - 2 each
(2-9/16" wall offset)



Panel Bracket - 2 each

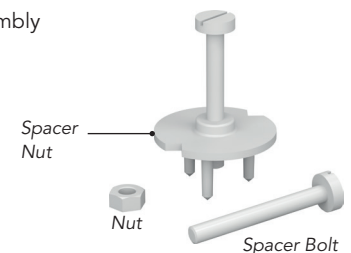


Stepped Spacer Assembly
(includes 2 each)

Spacer Nut - M8

Nut - M8

Spacer Bolt - 2-3/8"



Rockfon® Island™ Wall System Properties

Material

Stone wool (Mineral Wool) island with factory applied water-based paint on glass scrim on visible side and white acoustic fleece on rear side.



ASTM E1264 Classification

ASTM E1264 (2022): Type IV, Form 3, Pattern G
ASTM E1264 (2023): Type A, Form A2.3, Pattern G



Fire Performance

Stone wool Wall Systems achieve Class A fire requirements and are tested for Surface Burning Characteristics to ASTM E84 for the US and CAN/ULC S102 for Canada.

Surface burning characteristics:
UL723 (ASTM E84): Flame Spread Index: 0
Smoke Developed Index: 5
CAN/ULC S102: Flame Spread Index: 5
Smoke Developed Index: 5



Mold and Mildew Resistance

Rockfon® Island™ Wall System stone wool substrate and island surfaces are inherently resistant to mold and mildew and are tested to ASTM D3273 (Standard Test Method for Resistance to Growth of Mold on the Surface of Interior Coatings) and ASTM C1338 (Standard Test Method for Determining Fungi Growth Resistance of Insulation Materials and Facings).



Humidity Resistance

Rockfon® Islands™ are inherently resistant and are tested to ASTM C367 (Standard Test Methods for Strength Properties of Prefabricated Architectural Acoustical Tile or Lay-In Ceiling Panels) and won't sag or warp even in 100% relative humidity.



Cleaning

✓ Vacuum



Sound Absorption

Octave Band (Hz)	125	250	500	1000	2000	4000	NRC
5/8" Air Space	0.32	0.79	1.13	1.13	1.12	1.09	1.05
2-9/16" Air Space	0.42	0.90	1.22	1.20	1.18	1.13	1.15



Sustainability

Stone wool ceiling tiles are UL GREENGUARD Gold certified for low VOC (chemical) emissions and meet the California Department of Public Health (CDPH) Standard Method v1.2-2017 for offices and classroom environments.

Selected potential applications: LEED, WELL, CHPS, LBC, Green Globes, BREEAM Int. and CALGreen

- ✓ UL GREENGUARD Gold
- ✓ Environmental Product Declaration (Product-Specific, Type III)
- ✓ Health Product Declaration



Environment

29% recycled content. Recycled content based on European manufacturing.



Embodied Carbon

Global Warming Potential (GWP) kg of CO₂-eq (per functional unit) from stages A1 - A3 for SQ Edge: 6.13 kg CO₂-eq (per 1m²)* / 0.570 kg CO₂-eq (per 1f²)*
*For all other edge types, refer to p. 2



Warranty

30-Year Limited Product Warranty
See rockfon.com



GREENGUARD Gold Certified
for Office and Educational
Environments



Visit rockfon.com to learn
more about Rockcycle.

110424

Rockfon

4849 S. Austin Ave.
Chicago, IL 60638 USA

2024 | Subject to alterations in range and product technology
without prior notice. Rockfon accepts no responsibility for printing errors.
© ROCKWOOL A/S 2022. All rights reserved.

® denotes a trademark that is registered in the United States of America.

Tel. +1-800-323-7164
Fax. +1-800-222-3744
rockfon.com