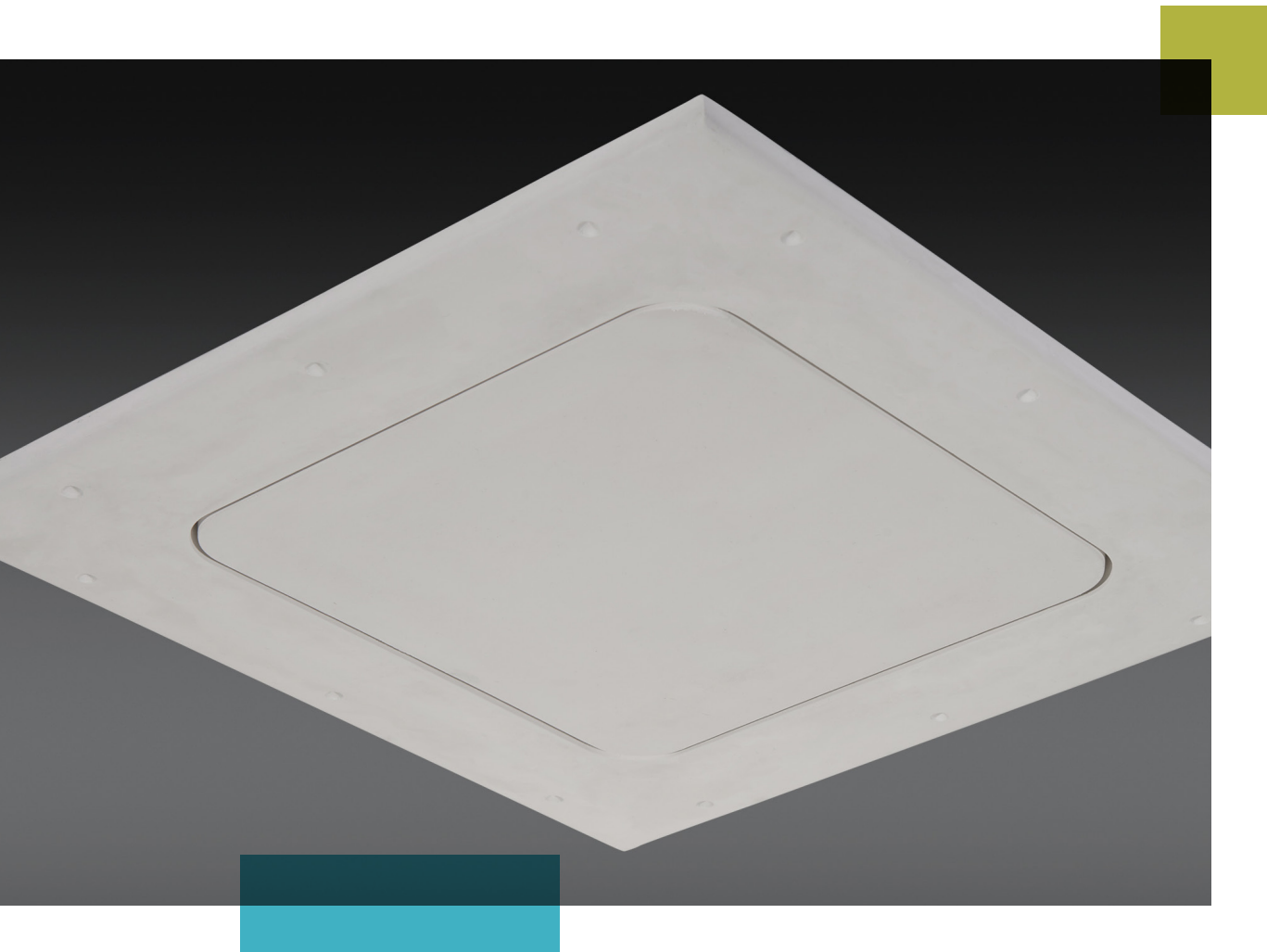


# Rockfon<sup>®</sup> GRG Access Doors

## For Use with Drywall Ceilings

- GRG frame and doors for use with drywall ceilings
- Installs and finishes in the same manner as drywall
- Attaches with drywall screws
- Taping and finishing is the same as conventional drywall finishing techniques



#### Materials and Resources (MR)

Waste Management Planning	✓
Interiors Life Cycle Impact Reduction	✓
Environmental Product Declarations	✓
Sourcing of Raw Materials	✓
Material Ingredients	—
Waste Management	✓

#### Indoor Environmental Quality (EQ)

Low-Emitting Materials	✓
Interior Lighting	—
Acoustic Performance	—



- Includes door and frame
- Attach with standard drywall screws
- Finish the same as drywall

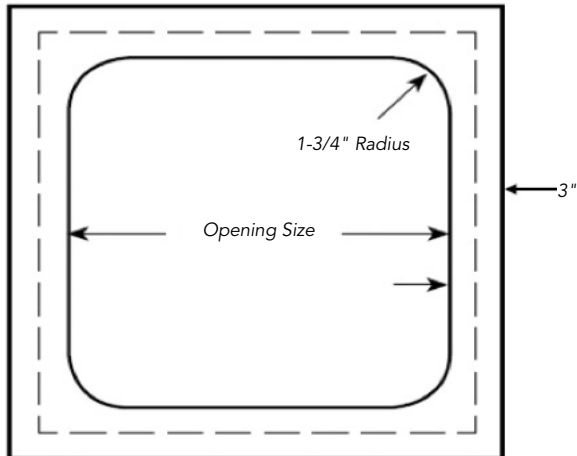
### GRG Drywall Access Doors and Frames



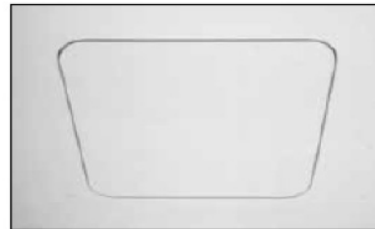
Description	Product Number	Rockfon Part Number	Opening Size	Material	Carton Quantity	Carton Weight	Low VOC	Fire Class
9" x 9" Access Door	8501.00	250377	9" x 9"	Glass Reinforced Gypsum	2	10	Yes	A
12" x 12" Access Door	8502.00	310081	12" x 12"	Glass Reinforced Gypsum	2	14	Yes	A
18" x 18" Access Door	8503.00	310082	18" x 18"	Glass Reinforced Gypsum	2	18	Yes	A
24" x 24" Access Door	8504.00	313253	24" x 24"	Glass Reinforced Gypsum	2	32	Yes	A
30" x 30" Access Door	8505.00	313256	30" x 30"	Glass Reinforced Gypsum	2	44	Yes	A

Kits include doors and frames.

Packaged 2 complete door frame kits per carton.



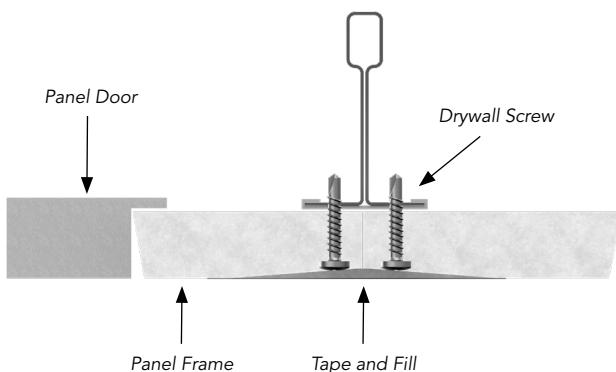
Add 3" on each side of door for frame installation



Access Door in place ...



... and partially removed



### Technical Requirements:

#### 1. Size Requirements

Panels are defined by the opening size. Rough opening dimensions are an additional 6" added onto the opening size. Standard access panels are push-out type. Custom sizes are available.

#### 2. Fasteners and Attachments

Panels are installed with standard supplies; screws are to be #6 bugleheads and joints use standard tape and joint compound. The panel has an edge thickness to accommodate 5/8" drywall, so shimming may be required if adjacent material is not 5/8" drywall.

#### 3. Finishing (by installer)

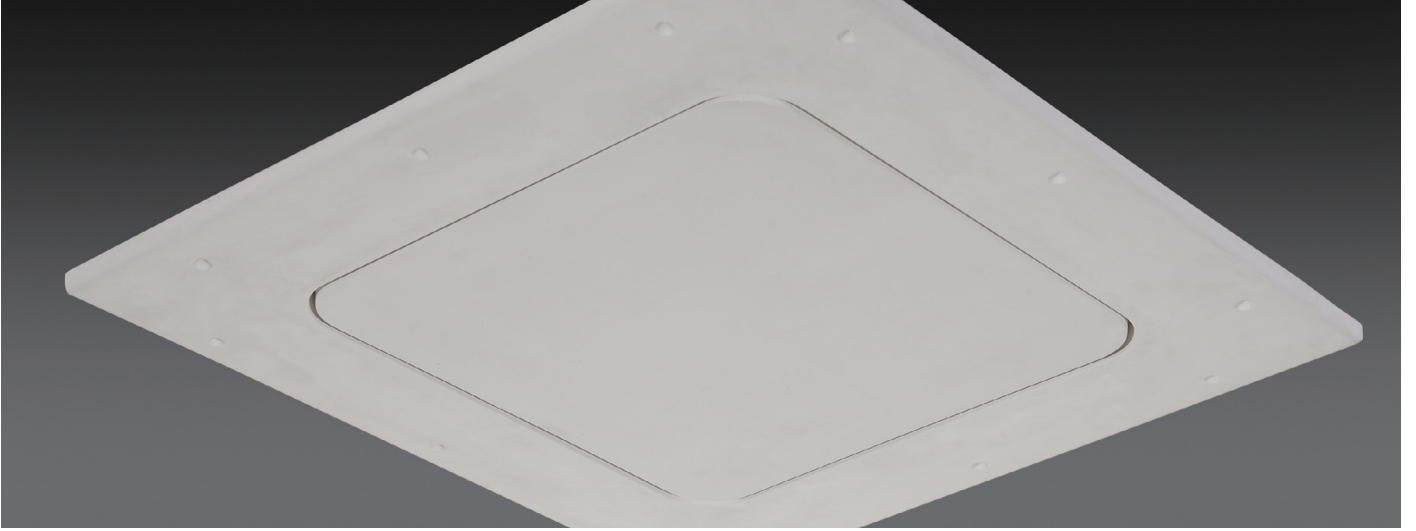
Use same method as drywall.

#### 4. Framing, Studs or Blocking

Substrate material is determined by job site conditions. The panel does not require regular framing, but can be connected to adjacent drywall using blocks or studs. The weight of the panel is 2 lbs./sq. ft.

#### 5. Physical Properties

Shell Thickness: 1/8" to 3/16"  
Fuel Contribution (ASTM E 84-80): 0  
Flame Spread (ASTM E 84-80): 0  
Smoke Index (ASTM E 84-80): 0  
Combustion (ASTM E 84-80): Non-Combustible



## Material

Glass Reinforced Gypsum



### Fire Performance

Surface burning characteristics:  
UL723 (ASTM E84) Flame Spread Index: 0  
Smoke Developed Index (UL Labeled): 0



### Warranty

1-Year Limited Product Warranty  
See [rockfon.com](http://rockfon.com)



### Cleaning

Damp cloth

012422

## Rockfon

4849 S. Austin Ave.  
Chicago, IL 60638 USA

2022 | Subject to alterations in range and product technology without prior notice. Rockfon accepts no responsibility for printing errors.  
© ROCKWOOL International A/S 2018. All rights reserved.  
® denotes a trademark that is registered in the United States of America.

Tel. +1-800-323-7164  
[cs@rockfon.com](mailto:cs@rockfon.com)  
[rockfon.com](http://rockfon.com)