

Rockfon® Impact™

0.85
NRC

GWP AS LOW AS

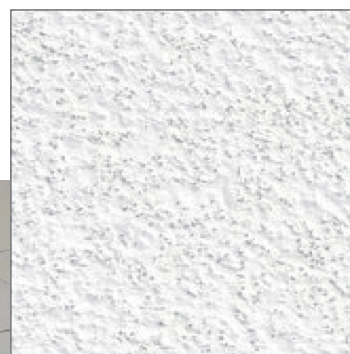
0.226 kg CO₂ eq/ft²

Features & Benefits

- Designed to withstand high-impact environments providing robust and durable solutions for areas with frequent physical contact
- Offers high sound absorption with an NRC of 0.85
- Class A fire performance with 0 Smoke Development and 5 Flame Spread per ASTM E84
- High light reflectance of 86% helps create brighter spaces

Applications

- Recreational Center
- Convention Center



**High Acoustic
Absorption**



**Class A Fire
Performance**



**Moisture and
Sag Resistance**



**Smooth, Modern
Aesthetics**



**Mold and Mildew
Resistance**



**30
YEAR
WARRANTY**

**30-year Warranty
Applies to All Stone
Tiles and Panels**



Materials and Resources (MR)

- Waste Management Planning
- Interiors Life Cycle Impact Reduction
- Environmental Product Declarations
- Sourcing of Raw Materials
- Material Ingredients
- Waste Management

Indoor Environmental Quality (EQ)

- Low-Emitting Materials
- Interior Lighting
- Acoustic Performance


Recycled Content: up to 41%*

High Performance Factors

Base Material	Stone Wool
Surface	Lightly Textured White
Fire Performance	Class A Tested to US Standard ASTM E84: Flame Spread Index: 0 Smoke Developed Index: 5 Canadian Standard CAN/ULC S102: Flame Spread Index: 5 Smoke Developed Index: 0
Warranty	30-Year Tile Warranty

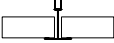
Mold & Mildew Resistance	herently Resistant (applies to stone wool substrate and tile surfaces) Tested to ASTM D3273: 10 (Scale of 0 to 10, 10 being highest performing) Tested to ASTM C1338: Pass (Pass or Fail, Stone Wool Tiles Pass)
Sag Resistance	Won't Sag or Warp Even in 100% Relative Humidity Tested to ASTM C367
Low VOC	UL GREENGUARD Gold Certified

Standard Panels

<div>CLASSIFIED</div> <div>C^{UL} US</div>												
Edge Designation	Item Number	Modular Size (nominal)	NRC	Fire Class	Mold & Mildew Resistance	Sag Resistance (relative humidity)	Light Reflectance	Embodied Carbon		Low VOC	lbs/sqft	sqft/carton
								Per 1m² (kg CO₂ - eq)	Per 1ft² (kg CO₂ - eq)			
<div>SQ</div> <div></div> <div>Square Lay-In</div>	4100	2' x 2' x 3/4"	0.85	A	✓	up to 100%	0.86	2.43	0.226	✓	0.45	80
	4200	2' x 2' x 1 1/2"	0.85	A	✓	up to 100%	0.86	6.13	0.570	✓	0.82	40

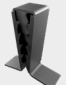





*Recycled content values for our stone wool tiles and panels are based on 2021 production averages of a standard 2' x 2' tile and their primary production location.

Product Compatibility

15/16" Suspension Systems
200, 1200 and Fire Rated systems
<div>SQ</div> <div></div> <div>Square Lay-in</div>

Rockfon® Impact™

Accessories

	Detail	Rockfon Part Number	Product Number	Product Description	Packaging	
					Pcs/ Ctn	Lbs/ Ctn
General Clips*		250348	935.00	Universal Hold Down Clip	1000	16
		237949	490.00	Hold Down Clip for 0" - 3/4" Panels (Black)	100	2
		237952	491.00	Hold Down Clip for 3/4" - 1-1/4" Panels (Blue)	150	2
		237954	492.00	Hold Down Clip for 1-1/2" Panels (Grey)	100	2
		250324	426.01	Butterfly Retention Clip for 0" - 1" Panels	200	15
		250325	427.01	Butterfly Retention Clip for 1" - 2" Panels	150	15
Tile Paint		307988	RFN941	Edge Paint for Field Cut Panels White – 8 oz	Bottle	1
		307989	RFN941Q	Edge Paint for Field Cut Panels White – 32 oz	Can	1

*Clips should be chosen as per tile thickness

Scan for Full Accessories Guide



Rockfon® Impact™ Properties

Material

Stone wool (Mineral Wool) ceiling tiles with factory applied water-based paint on reinforced glass scrim to increase impact resistance.



ASTM E1264 Classification

ASTM E1264 (2022): Type IV, Form 3, Pattern E
ASTM E1264 (2023): Type A, Form A2.3, Pattern E



Fire Performance

Stone wool ceiling tiles achieve Class A fire requirements and are tested for Surface Burning Characteristics to ASTM E84 for the US and CAN/ULC S102 for Canada.

Rockfon® Impact™ Surface burning characteristics:
UL723 (ASTM E84): Flame Spread Index: 0
Smoke Developed Index: 5
CAN/ULC S102: Flame Spread Index: 5
Smoke Developed Index: 0



Mold and Mildew Resistance

Rockfon® Impact™ stone wool substrate and tile surfaces are inherently resistant to mold and mildew and are tested to ASTM D3273 (Standard Test Method for Resistance to Growth of Mold on the Surface of Interior Coatings) and ASTM C1338 (Standard Test Method for Determining Fungi Growth Resistance of Insulation Materials and Facings).



Humidity Resistance

Stone wool ceiling tiles are inherently resistant and are tested to ASTM C367 (Standard Test Methods for Strength Properties of Prefabricated Architectural Acoustical Tile or Lay-In Ceiling Panels) and won't sag or warp even in 100% relative humidity.



Impact Resistance

Rockfon® Impact™ capability to withstand incidental or occasional ball impact has been tested. For more details, please contact customer service.



Cleaning

- ✓ Vacuum
- ✓ Damp cloth



Sustainability

Rockfon® Impact™ tiles are UL GREENGUARD Gold certified for low VOC (chemical) emissions and meet the California Department of Public Health (CDPH) Standard Method v1.2-2017 for offices and classroom environments.

Selected potential applications: LEED, WELL, CHPS, LBC, Green Globes, BREEAM Int. and CALGreen

- ✓ UL GREENGUARD Gold
- ✓ Environmental Product Declaration (Product-Specific, Type III)



Environment

Up to 41% recycled content. Recycled content based on European manufacturing.



Embodied Carbon

Global Warming Potential (GWP) kg of CO₂-eq (per functional unit) from stages A1 - A3 for SQ Edge:
2.43 kg CO₂-eq (per 1m²)* / 0.226 kg CO₂-eq (per 1f²)*
*For all other thicknesses, refer to p. 2



Thermal Resistance

R 3.47 hr.ft².°F/Btu per 1 inch (I-P)
R 0.61 m².K/W per 25.4 mm (SI)



Tile Directionality

Rockfon® Impact™ tiles are directional and must be installed according to backside arrow direction. The arrow can be turned 180°, not 90°.



Warranty

30-Year Limited Product Warranty
See rockfon.com



GREENGUARD Gold Certified
for Office and Educational
Environments



CERTIFIED Environmental
Product Declaration

Find us on

MasterSpec®

Powered by Deltek Specpoint®

BIM/Revit objects available at:
rockfon.com/products/rockfon-impact/



Visit rockfon.com to learn
more about Rockcycle.

110524

Rockfon

4849 S. Austin Ave.
Chicago, IL 60638 USA

2024 | Subject to alterations in range and product technology
without prior notice. Rockfon accepts no responsibility for printing errors.
© ROCKWOOL 2022. All rights reserved.

® denotes a trademark that is registered in the United States of America.

Tel. +1-800-323-7164
cs@rockfon.com
rockfon.com